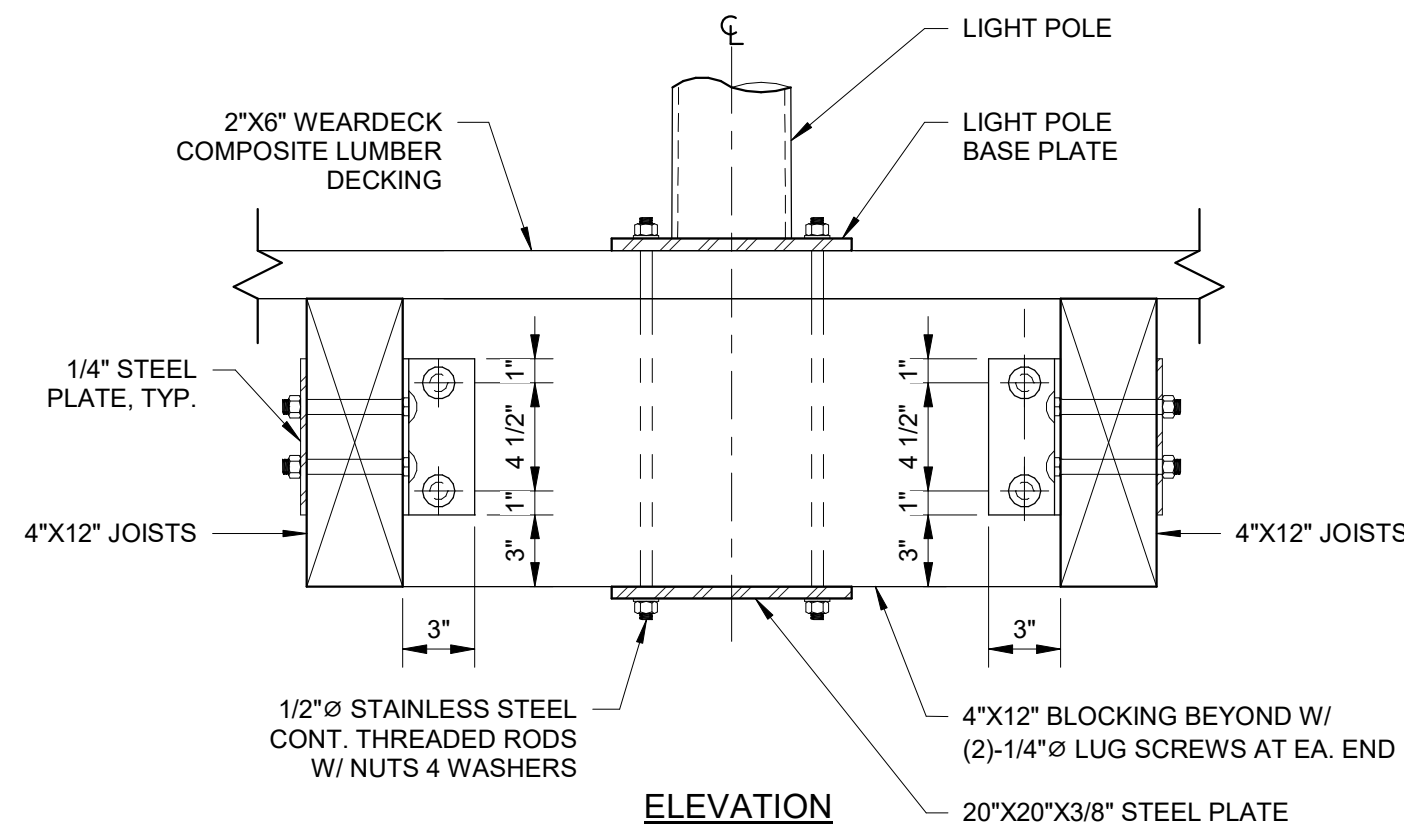
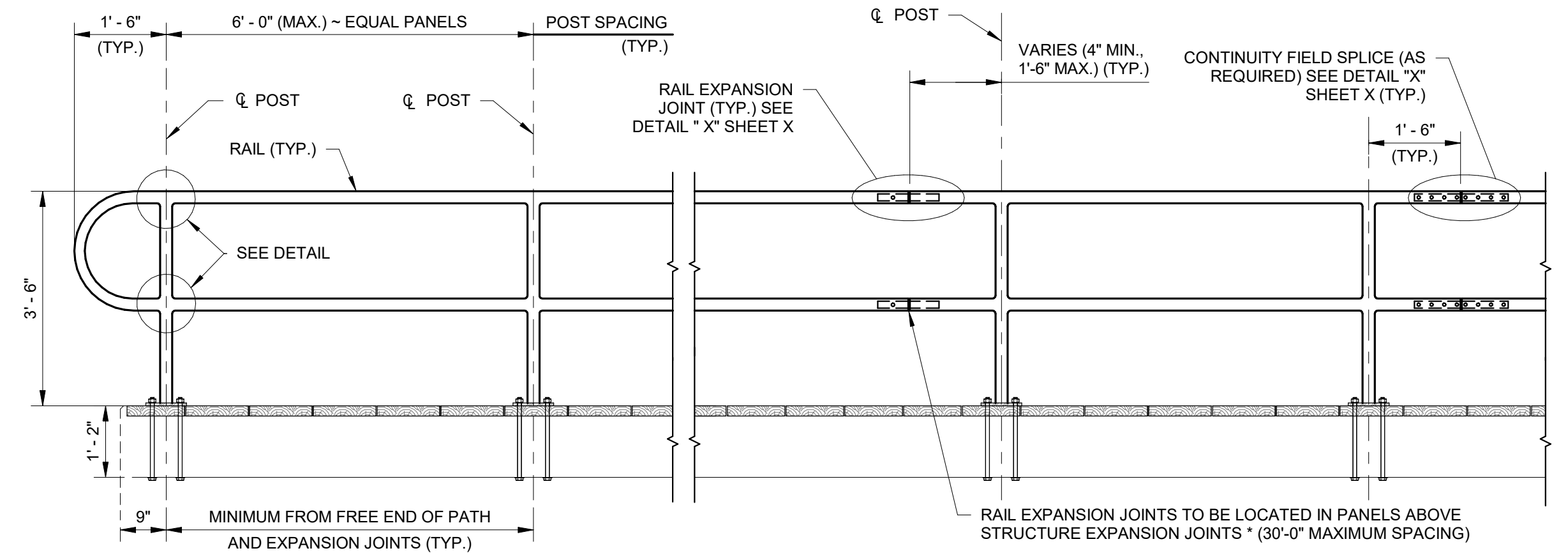


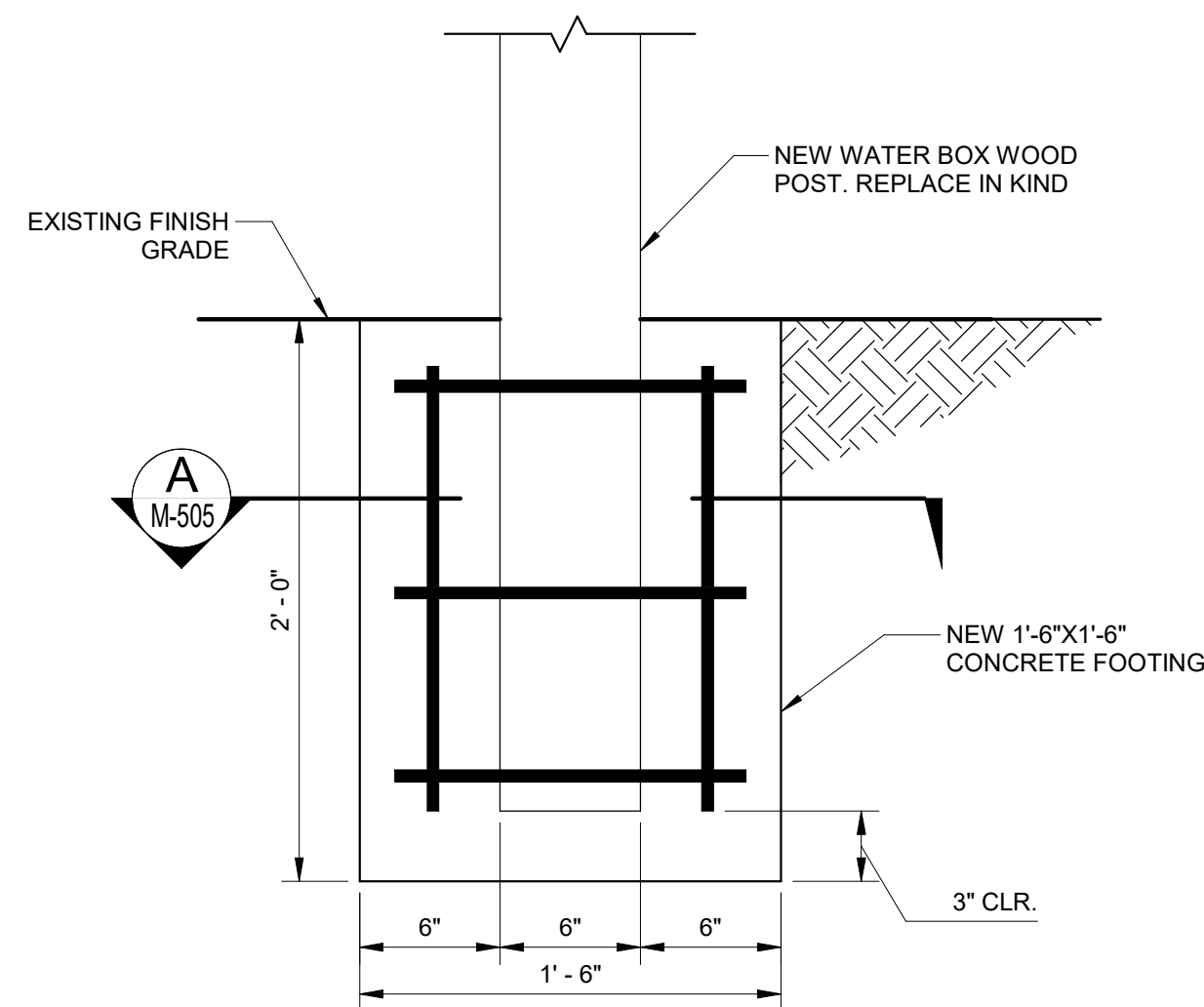
1 LIGHT POLE - DETAIL
1 1/2" = 1'-0"



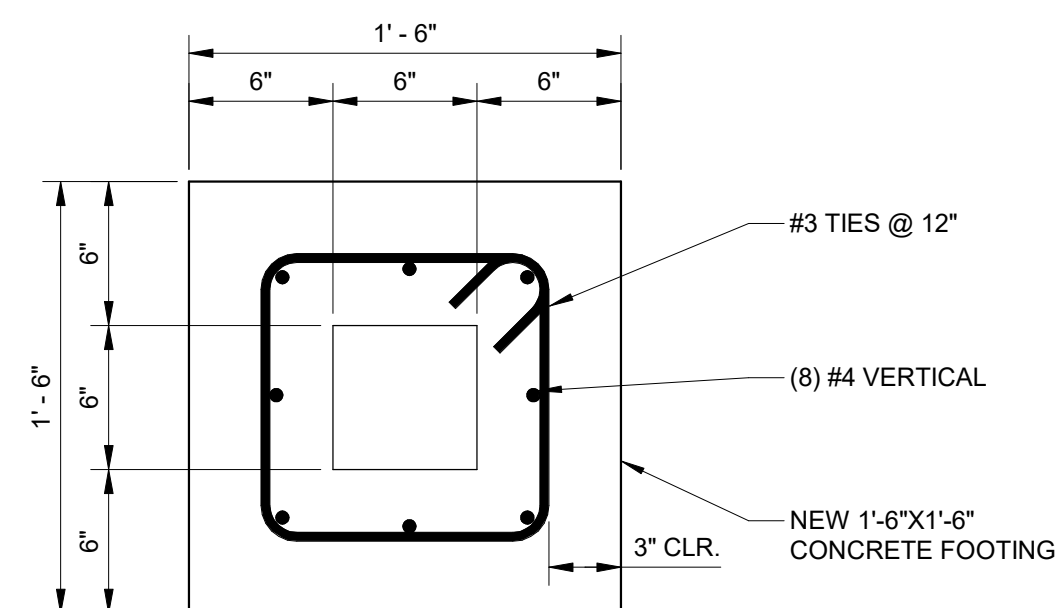
2 GUARDRAIL POST INSTALLATION IN CONCRETE
1 1/2" = 1'-0"



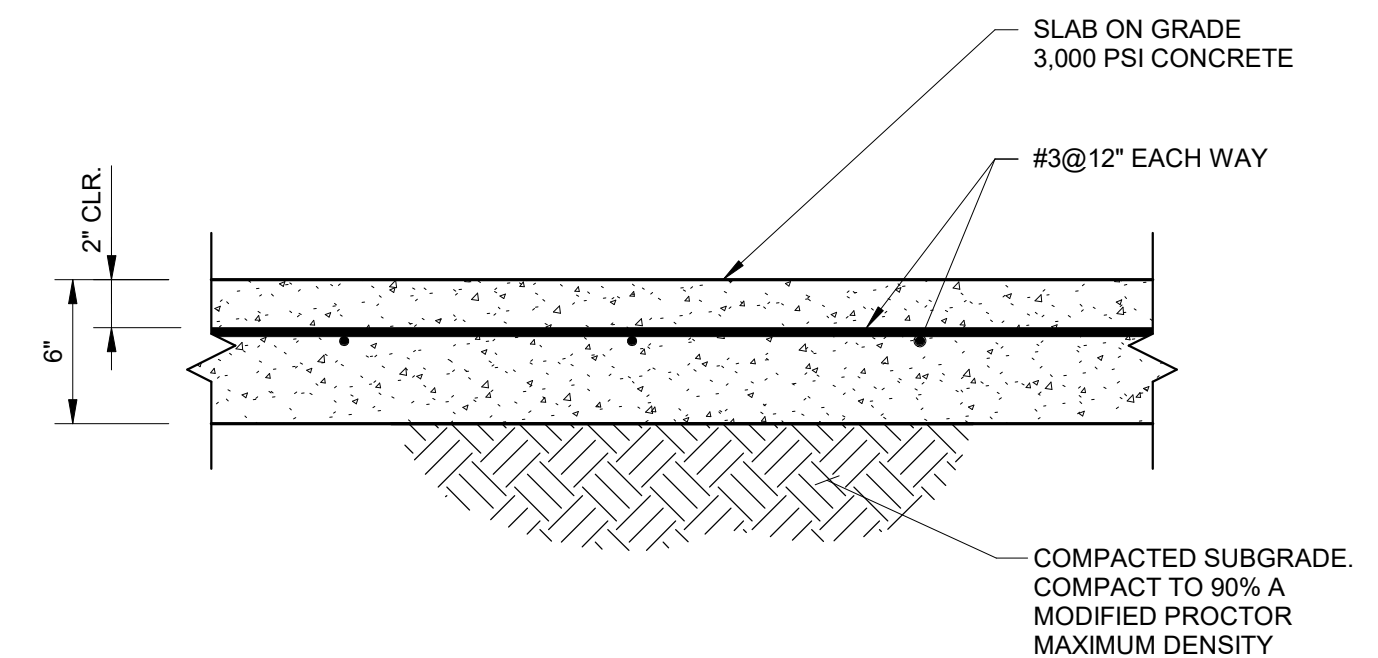
3 ALUMINUM GUARDRAIL TYP. ELEVATION
1/2" = 1'-0"



4 WATER BOX FOOTING - DETAIL
1 1/2" = 1'-0"



SECTION A
1 1/2" = 1'-0"



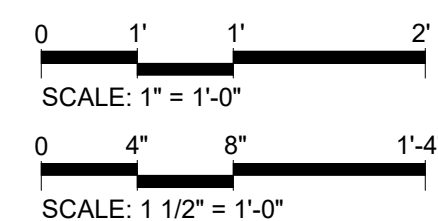
5 SLAB ON GRADE TYPICAL - DETAIL
1 1/2" = 1'-0"

NOTES:

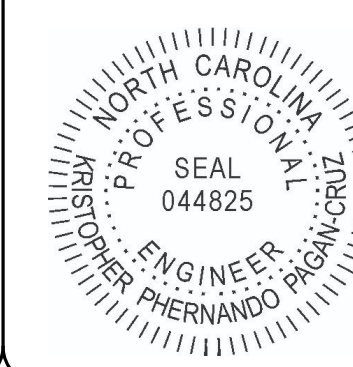
- CONTRACTOR TO COORDINATE FINAL LOCATION OF 4"x12" BLOCKING WITH LIGHT POLE BASE PLATE.

MOTT MACDONALD
930 Main Campus Drive,
Suite 200
Raleigh, NC 27606
License No. F-0669
T +1 (919) 552 2253
F +1 (919) 552 2254
www.mottmacamericas.com

GRAPHIC SCALE



PROJECT ENGINEER



Designed By	JAVIER QUIROS	County	DARE COUNTY		
Entered By	VICTOR PADILLA	Division	FERRY DIVISION		
Project Engineer	KRISTOPHER PAGAN	Plan Date	1-14-26		
Project Manager	ALLISON THORBURN				
Rev.	Date	Drawn	Description	Ch'kd	App'd

NCDOT HATTERAS FERRY DOCK REPLACEMENT

**M-505 MISCELLANEOUS DETAILS
(5 OF 5)**